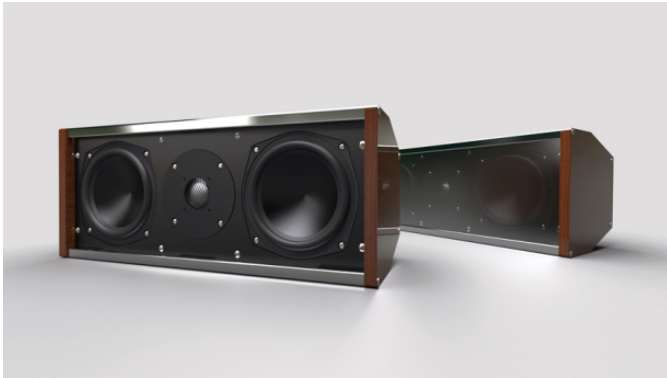


Leon Speakers Goes Outside

Written by Marco Attard
24. 07. 2012



Leon Speakers takes on the outdoor speaker market with the Boundary B404-- the first model from the new Boundary speaker lineup ideal for use in open, covered outdoor spaces.

The solid mahogany (45.2 x 15.9 x 15.2cm) cabinet houses two 4-inch aluminium woofers and a 1-inch aluminium/magnesium dome tweeters. The speaker is designed for use with a subwoofer, but a larger model with 6-inch woofers is in the works.

Go [Leon Speakers](#)